



Buckthorn Grange Apartments, Ewell

The **PERSONAL** Agent



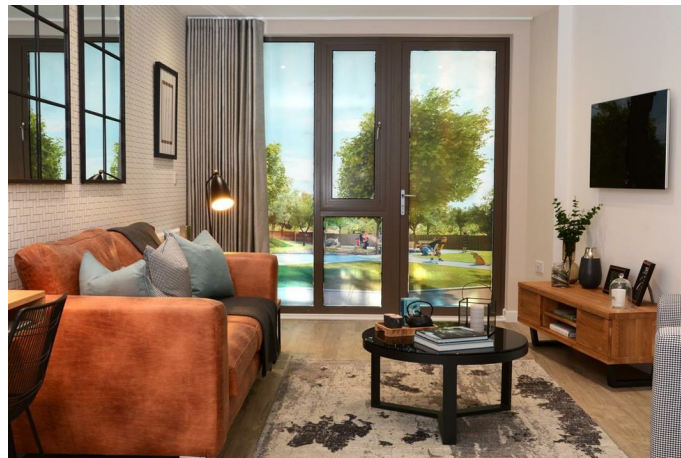
# £355,950

- 20% Help To Buy Available
- Stunning Apartments
- One and Two Bedrooms Apartments Available
- Walking Distance To Ewell Village
- Stunning Specification
- Call To Reserve Now



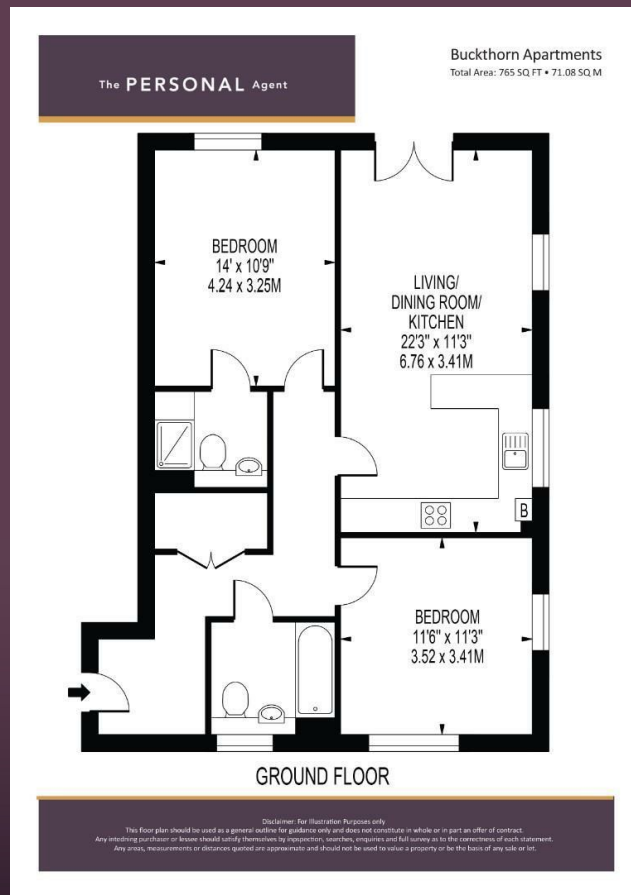
The Personal Agent are delighted to welcome to the market this stunning development of new homes in Ewell. This phase is a release of high end and spacious 1 and 2 bedrooms apartments with 20% help to buy available to first time buyers. A range of local amenities – including shops, sports facilities and open space – will be attractive to families, while professionals working in London will appreciate the convenient 35-minute commute into Waterloo station.


The Personal Agent are delighted to welcome to the market this stunning development of new homes in Ewell. This phase is a release of high end and spacious 1 and 2 bedrooms apartments with 20% help to buy available to first time buyers. A range of local amenities – including shops, sports facilities and open space – will be attractive to families, while professionals working in London will appreciate the convenient 35-minute commute into Waterloo station.









Energy Efficiency Rating		
	Current	Potential
Very energy efficient - lower running costs		
(92 plus) <b>A</b>		
(81-91) <b>B</b>		
(69-80) <b>C</b>		
(55-68) <b>D</b>		
(39-54) <b>E</b>		
(21-38) <b>F</b>		
(1-20) <b>G</b>		
Not energy efficient - higher running costs		
<b>England &amp; Wales</b>		EU Directive 2002/91/EC 

**EPSOM OFFICE**  
2 West Street  
Epsom, Surrey, KT18 7RG  
01372 745 850

**STONELEIGH/EWELL OFFICE**  
62 Stoneleigh Broadway  
Stoneleigh, Surrey, KT17 2HS  
020 8393 9411

**BANSTEAD OFFICE**  
141 High Street  
Banstead, Surrey, SM7 2NS  
01737 333699

**LETTINGS & MANAGEMENT**  
163 High Street  
Epsom, Surrey, KT19 8EW  
01372 726 666



The Personal Agent Ltd. Registered office: 2A Boston Rd, Henley-on-Thames RG9 1DY.  
Registered in England No. 4398817.



The  
**PERSONAL**  
Agent

**Please Note:** Whilst every attempt has been made to ensure the accuracy of the floorplans contained here, measurements of doors, windows and room areas are approximate and no responsibility is taken for any error, omission or mis-statement. These plans are for representation purposes only and should be used as such by and prospective purchaser. The services, systems and appliances listed in the specification have not been tested by The Personal Agent and no guarantee as to their operating ability or their efficiency can be given. All images and text used to advertise our properties are for the sole use of The Personal Agent Ltd.

